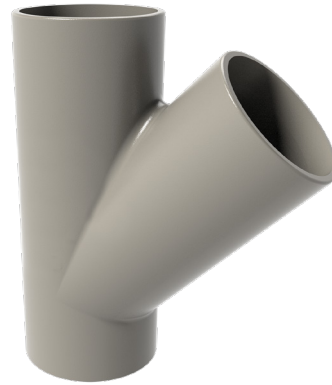


ITINERO

Short single branch 45°



DESCRIPTION

Part of the range dedicated to infrastructure, the Itinero single branch allows the junction between two pipe runs at a 45° angle for conveying surface water. Designed for bridges and tunnels, the cast iron fittings are coated with a thick grey powder epoxy layer and are indefinitely recyclable.

Material & Coatings

- Cast Iron
- Coating: red-brown, anti-corrosive cataphoresis epoxy, average dry film thickness 70 µm.

RECOMMENDED USE

- Aggressive outdoor environment
- Buried networks
- Hydrocarbon Wastewater
- Runoff water

TECHNICAL FEATURES

- Hot water resistance: 24h at 95°C.
- Thermal cycle resistance: 1500 cycles between 15°C and 93°C.
- Chemical resistance for $2 \leq \text{pH} \leq 12$.
- Salt spray resistance: more than 4500 h.

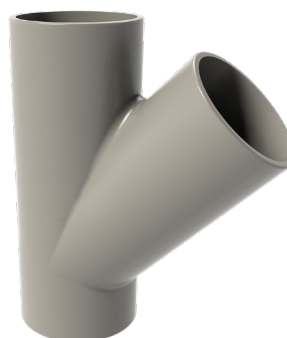
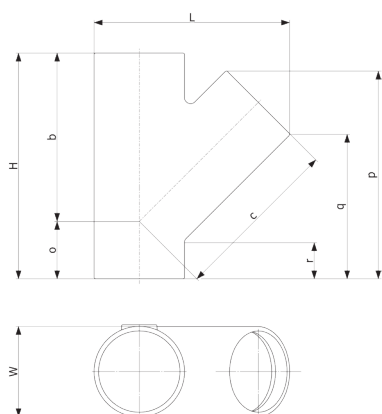
STANDARDS & APPROVALS

- Industry Product Standards: EN 877, DIN 19522, CE
- Range reaction to fire: Euroclass A2-s1,d0

ENVIRONMENTAL DATA

- Percentage of Recycled Content: 99 %
- Recycling Information: Cast iron is fully recyclable through the existing recycling industrial network.
Data source: Environmental Product Declaration S-P-02013





DN	dn	L	H	W	b	c	o	p	q	r	Weight	Product Code
100	100	238	275	110	205	205	70	253	175	45	4.0	277824
125	100	261	280	135	220	220	60	254	177	47	5.0	277830
125	125	284	320	135	240	240	80	296	201	49	5.2	277832
150	100	287	295	160	240	240	55	262	185	54	5.8	277835
150	125	307	325	160	255	255	70	298	202	52	7.4	277836
150	150	323	355	160	265	265	90	333	219	53	7.9	277837
200	100	340	310	210	270	280	40	275	197	64	9.3	277838
200	125	360	340	210	285	295	55	310	215	62	11.6	277839
200	150	383	375	210	300	300	75	353	240	66	12.3	277883
200	200	418	455	210	340	340	115	428	280	68	17.1	277884
250	100	398	330	274	315	315	15	276	198	72	13.6	277914
250	125	420	370	274	335	335	35	318	223	75	17.8	277911
250	150	440	405	274	350	350	55	358	245	75	22.0	277885
250	200	486	480	274	390	390	90	440	291	75	22.4	277886
250	250	537	560	274	430	430	130	529	335	70	29.0	277887
300	100	445	350	326	345	345	5	287	208	88	18.9	277915
300	125	464	375	326	360	360	15	316	221	80	22.7	277909
300	150	487	415	326	380	380	35	359	246	81	28.0	277913
300	200	547	485	326	415	440	70	454	305	81	31.0	277908
300	250	588	580	326	465	465	115	540	347	80	37.6	277888
300	300	634	660	326	505	505	155	661	431	115	46.3	277889
400	300	728	660	429	555	565	105	618	388	86	56.4	277890
500	300	861	720	532	635	680	85	680	448	114	86.0	277907
600	300	965	725	635	687	751	38	683	452	115	100.0	277850

All dimensions are in mm and nominal weights are in kg

This document is provided for information purposes only and our company reserves the right to modify the information contained herein at any time. Our company declines all responsibility in the event of the use or installation of materials that do not comply with the rules prescribed in this document as well as with the standards, the technical documents and the applicable professional standards. Any orders placed will be subject to our General Terms and Conditions of Sale, available on request. The drawings and/or images are the exclusive property of Pam Building and are confidential. They must not be reproduced or disclosed to any third party without written consent. They may only be used for the purpose for which they were issued and are returnable on request.