

SMU PLUS

Eccentric reducer



DESCRIPTION

Part of the Specialized Plus range drainage system, the SMU Plus reducers enable transition of pipe sizes to optimise the flow requirements of your system. Designed for intensive use, the cast iron reducers are coated with a 300 µm grey powder epoxy coating and are fully recyclable.

Material & Coatings

- Cast Iron
- Coating: grey RAL 7015, epoxy, average dry film thickness 300 µm.

RECOMMENDED USE

- Aggressive effluents
- Corrosive atmosphere
- Fat Wastewater
- Hot effluents
- Industrial Wastewater

TECHNICAL FEATURES

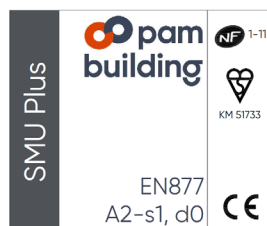
- Hot water resistance: 24h at 95°C.
- Thermal cycle resistance: 1500 cycles between 15°C and 93°C.
- Chemical resistance for $1 \leq \text{pH} \leq 13$, up to 80°C.
- Salt spray resistance: more than 2500h.

STANDARDS & APPROVALS

- Industry Product Standards: EN 877, CE, NF, Kitemark, Qplus prR 592012-3, GOST, SINTEF
- Range acoustic performance: $L_{sc,A} < 10 \text{ dB(A)}$ & $L_{a,A} = 47 \text{ dB(A)}$ according to EN 14366 with 2 l/s.
- Range reaction to fire: Euroclass A2-s1,d0

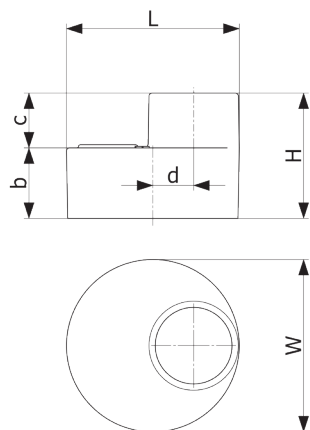
ENVIRONMENTAL DATA

- Percentage of Recycled Content: 99 %
- Recycling Information: Cast iron is fully recyclable through the existing recycling industrial network.
Data source: Environmental Product Declaration S-P-02013



SMU PLUS

Eccentric reducer



DN	dn	L	H	W	b	c	d	Weight	Product Code
75	50	83	80	83	47	33	13	0.65	155312
100	50	110	80	110	45	35	26	0.9	155313
100	75	110	90	110	45	45	14	1.0	155337
125	50	135	85	135	50	35	39	1.5	173808
125	75	135	95	135	52	43	26	1.3	155338
125	100	135	95	135	50	45	13	1.6	155374
150	50	160	95	160	55	40	51	1.9	173811
150	75	160	100	160	57	43	39	1.9	155339
150	100	160	105	160	60	45	25	2.0	155375
150	125	160	110	160	60	50	13	2.0	155405
200	100	210	115	210	70	45	50	3.6	155376
200	125	210	120	210	70	50	38	3.8	155406
200	150	210	125	210	65	60	25	3.4	155439
250	100	274	125	274	82	43	82	6.0	155377
250	150	274	135	274	82	53	57	6.3	155437
250	200	274	145	274	80	65	32	6.9	155465
300	150	326	150	326	97	53	83	11.0	155438
300	200	326	160	326	95	65	58	10.2	155466
300	250	326	170	326	95	75	26	10.7	155487
400	300	429	200	429	100	100	52	19.6	155504

All dimensions are in mm and nominal weights are in kg

This document is provided for information purposes only and our company reserves the right to modify the information contained herein at any time. Our company declines all responsibility in the event of the use or installation of materials that do not comply with the rules prescribed in this document as well as with the standards, the technical documents and the applicable professional standards. Any orders placed will be subject to our General Terms and Conditions of Sale, available on request. The drawings and/or images are the exclusive property of Pam Building and are confidential. They must not be reproduced or disclosed to any third party without written consent. They may only be used for the purpose for which they were issued and are returnable on request.

Pam Building

130 Impasse du Chêne • 54700 BOUXIÈRES-SOUS-FROIDMONT • France • Tel: +33 (0) 3 66 88 19 47 • Email: tc@pambuilding.com • www.pambuilding.com
Simplified joint-stock company with a capital of 6,812,970.75€ • SIREN 799 283 882 • RCS NANCY