

# SMU S

## Long radius bend 88°



### DESCRIPTION

Part of the standard range, the SMU S 88° long radius bend allows a change of direction of the fluid waste and rainwater through buildings. The cast iron fittings are coated by cataphoresis and are fully and indefinitely recyclable.

### Material & Coatings

- Cast Iron
- Coating: red-brown, anti-corrosive cataphoresis epoxy, average dry film thickness 70 µm.

### RECOMMENDED USE

- Rainwater
- Valve water
- Wastewater

### TECHNICAL FEATURES

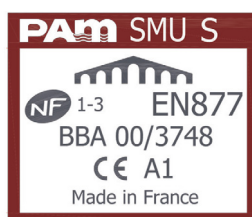
- Hot water resistance: 24h at 95°C.
- Thermal cycle resistance: 1500 cycles between 15°C and 93°C.
- Chemical resistance for  $2 \leq \text{pH} \leq 12$ .
- Salt spray resistance internal coating: more than 350 h.

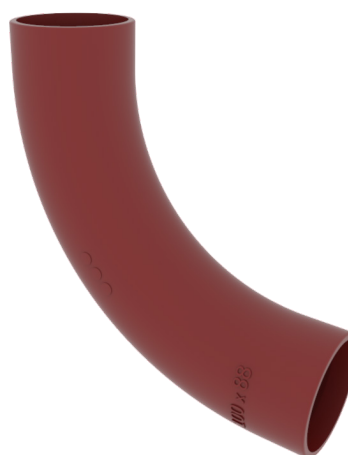
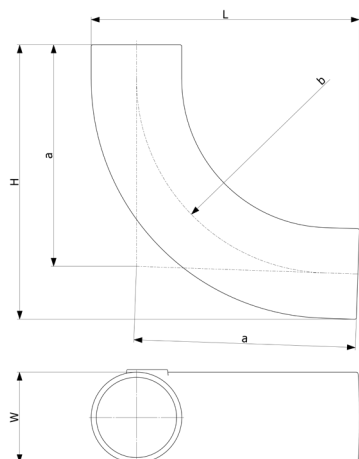
### STANDARDS & APPROVALS

- Industry Product Standards:
  - NF EN877
- Acoustic Performance:  $L_{sc} \leq 10$  dB(A) &  $L_{aA} = 47$  dB(A) according to EN 14366 with 2L/s.
- Range fire classification: A1

### ENVIRONMENTAL DATA

- Percentage of Recycled Content: 99 %
- Recycling Information: Cast iron is 100% recyclable through the existing recycling industrial network.  
Data source: Environmental Product Declaration S-P-02013





DN	L	H	W	a	b	Weight	Product code
100	324	324	110	269	230	4.2	156606
150	349	349	160	274	210	8	156860

All dimensions are in mm and nominal weights are in kg

This document is provided for information purposes only and our company reserves the right to modify the information contained herein at any time. Our company declines all responsibility in the event of the use or installation of materials that do not comply with the rules prescribed in this document as well as with the standards, the technical documents and the applicable professional standards. Any orders placed will be subject to our General Terms and Conditions of Sale, available on request. The drawings and/or images are the exclusive property of Saint-Gobain PAM and are confidential. They must not be reproduced or disclosed to any third party without written consent. They may only be used for the purpose for which they were issued and are returnable on request.

### Saint-Gobain PAM Bâtiment

21 avenue Camille Cavalier - BP 129 • 54705 • PONT-À-MOUSSON • France • Tel: +33 (0) 383 807 808 • Email: tcbatiment.sgpam@saint-gobain.com • www.pambuilding.com  
Société par action simplifiée au capital de 6 812 970,75€ • SIREN 799 283 882 • RCS NANCY