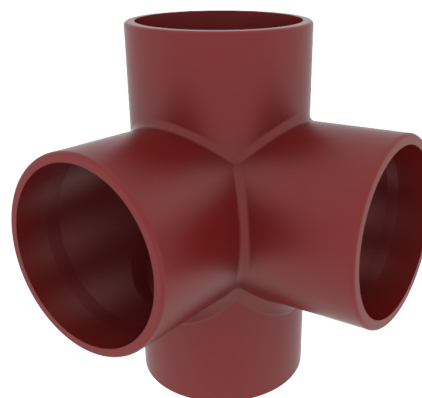


# SMU S

## Double corner branch 88°



### DESCRIPTION

Part of the Standard drainage system, the SMU S 88° short corner branche bend allows the double lateral connection to the main vertical soil stack. The cast iron fittings are coated with a reddish-brown epoxy film applied by cataphoresis and are fully and indefinitely recyclable.

### RECOMMENDED USE

- Rainwater
- Valve water
- Wastewater

### STANDARDS & APPROVALS

- Industry Product Standards:
  - NF EN877
- Acoustic Performance:  $L_{sc} \leq 10$  dB(A) &  $LaA = 47$  dB(A) according to EN 14366 with 2L/s.
- Range fire classification: A1

### Material & Coatings

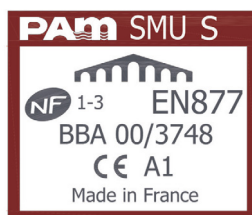
- Cast Iron
- Coating: red-brown, anti-corrosive cataphoresis epoxy, average dry film thickness 70  $\mu$ m.

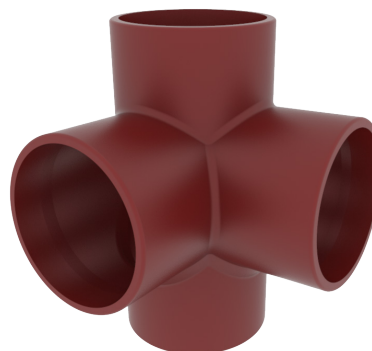
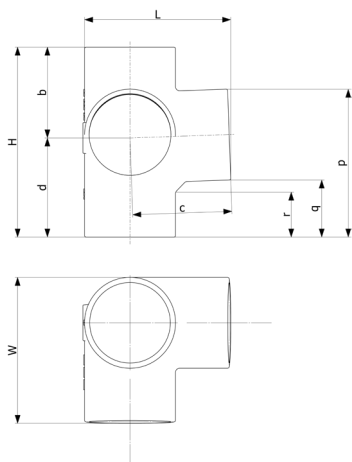
### TECHNICAL FEATURES

- Hot water resistance: 24h at 95°C.
- Thermal cycle resistance: 1500 cycles between 15°C and 93°C.
- Chemical resistance for  $2 \leq \text{pH} \leq 12$ .
- Salt spray resistance internal coating: more than 350 h.

### ENVIRONMENTAL DATA

- Percentage of Recycled Content: 99 %
- Recycling Information: Cast iron is 100% recyclable through the existing recycling industrial network.  
Data source: Environmental Product Declaration S-P-02013





DN	dn	L	H	W	b	c	d	p	q	r	Weight	Product Code
75	75	136	180	136	85	95	95	140	57	36	2	179682
100	75	165	190	165	90	110	100	145	62	40	2.8	179683
100	100	177	230	177	105	120	115	179	69	44	2.8	156712
125	100	199	235	199	110	130	125	184	74	48	4.3	155889
150	100	227	245	227	115	145	130	190	80	52	5.3	155919

All dimensions are in mm and nominal weights are in kg

This document is provided for information purposes only and our company reserves the right to modify the information contained herein at any time. Our company declines all responsibility in the event of the use or installation of materials that do not comply with the rules prescribed in this document as well as with the standards, the technical documents and the applicable professional standards. Any orders placed will be subject to our General Terms and Conditions of Sale, available on request. The drawings and/or images are the exclusive property of Saint-Gobain PAM and are confidential. They must not be reproduced or disclosed to any third party without written consent. They may only be used for the purpose for which they were issued and are returnable on request.

### Saint-Gobain PAM Bâtiment

21 avenue Camille Cavalier - BP 129 • 54705 • PONT-À-MOUSSON • France • Tel: +33 (0) 383 807 808 • Email: tcbatiment.sgpam@saint-gobain.com • www.pambuilding.com  
Société par action simplifiée au capital de 6 812 970,75€ • SIREN 799 283 882 • RCS NANCY