

# SMU PLUS

## Blank end



### DESCRIPTION

Part of the Specialized Plus range drainage system, the SMU Plus blank ends enable you to cap the ends of pipes or fittings. Designed for intensive use, the cast iron access fittings are coated with a 300 µm grey powder epoxy coating and are fully recyclable.

### RECOMMENDED USE

- Aggressive effluents
- Fat Wastewater
- Industrial Wastewater
- Corrosive atmosphere
- Hot effluents

### STANDARDS & APPROVALS

- Industry Product Standards:
  - NF EN877
- Acoustic Performance:  $L_{sc} \leq 10$  dB(A) &  $LaA = 47$  dB(A) according to EN 14366 with 2L/s.
- Range fire classification: A2-s1,d0

### Material & Coatings

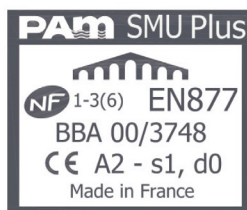
- Cast Iron
- Coating: grey RAL 7015, epoxy, average dry film thickness 300 µm.

### TECHNICAL FEATURES

- Hot water resistance: 24h at 95°C.
- Thermal cycle resistance: 1500 cycles between 15°C and 93°C.
- Chemical resistance for  $1 \leq pH \leq 13$ , up to 80°C.
- Salt spray resistance: more than 2500h.

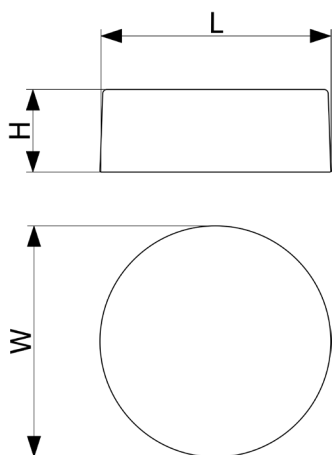
### ENVIRONMENTAL DATA

- Percentage of Recycled Content: 99 %
- Recycling Information: Cast iron is 100% recyclable through the existing recycling industrial network.  
Data source: Environmental Product Declaration S-P-02014



# SMU PLUS

## Blank end



DN	L	H	W	Weight	Product Code
50	58	30	58	0.25	155197
75	83	35	83	0.45	176783
100	110	40	110	0.8	155350
125	135	45	135	1.2	155257
150	160	50	160	1.7	155416
200	210	60	210	3.2	155449
250	274	70	274	5.9	155477
300	326	80	326	10	155494

All dimensions are in mm and nominal weights are in kg

This document is provided for information purposes only and our company reserves the right to modify the information contained herein at any time. Our company declines all responsibility in the event of the use or installation of materials that do not comply with the rules prescribed in this document as well as with the standards, the technical documents and the applicable professional standards. Any orders placed will be subject to our General Terms and Conditions of Sale, available on request. The drawings and/or images are the exclusive property of Saint-Gobain PAM and are confidential. They must not be reproduced or disclosed to any third party without written consent. They may only be used for the purpose for which they were issued and are returnable on request.

### Saint-Gobain PAM Bâtiment

21 avenue Camille Cavalier - BP 129 • 54705 • PONT-À-MOUSSON • France • Tel: +33 (0) 383 807 808 • Email: tcbatiment.sgpam@saint-gobain.com • www.pambuilding.com  
Société par action simplifiée au capital de 6 812 970,75€ • SIREN 799 283 882 • RCS NANCY