

SMU PLUS

Stack support pipe complete with bracket and seal

DESCRIPTION

Part of the Specialized Plus range drainage system, the SMU PLUS stack support pipe complete with bracket and seal is used to provide additional support for vertical pipe systems. It is made of cast iron. Designed for intensive use, the cast iron access fittings are coated with a 300 µm grey powder epoxy coating.

RECOMMENDED USE

- Aggressive effluents
- Fat Wastewater
- Industrial Wastewater
- Corrosive atmosphere
- Hot effluents

STANDARDS & APPROVALS

- Industry Product Standards:
 - NF EN877
- Acoustic Performance: $L_{sc} \leq 10$ dB(A) & $LaA = 47$ dB(A) according to EN 14366 with 2L/s.
- Range fire classification: A2-s1,d0



Material & Coatings

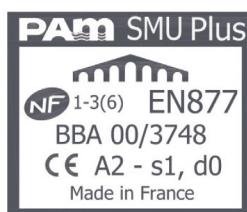
- Cast Iron
- Coating: grey RAL 7015, epoxy, average dry film thickness 300 µm.

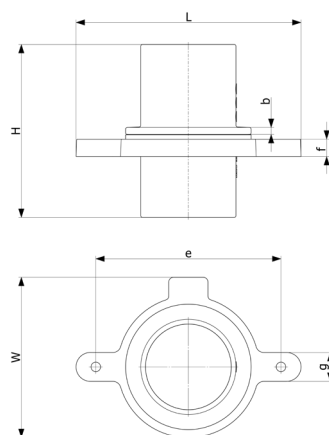
TECHNICAL FEATURES

- Hot water resistance: 24h at 95°C.
- Thermal cycle resistance: 1500 cycles between 15°C and 93°C.
- Chemical resistance for $1 \leq pH \leq 13$, up to 80°C.
- Salt spray resistance: more than 2500h.

ENVIRONMENTAL DATA

- Percentage of Recycled Content: 99 %
- Recycling Information: Cast iron is 100% recyclable through the existing recycling industrial network. Data source: Environmental Product Declaration S-P-02014





DN	L	H	W	b	e	f	g	Weight	Product Code
50	195	220	108	8	150	17	30	2.5	212273
75	218	220	133	8	175	19	30	3.1	211041
100	259	220	162	8	214	20	32	4.3	171912
125	275	220	187	8	214	20	32	5.4	211042
150	300	220	222	8	255	22	32	7.2	171914
300	498	300	406	8	448	30	40	26.5	208264

All dimensions are in mm and nominal weights are in kg

This document is provided for information purposes only and our company reserves the right to modify the information contained herein at any time. Our company declines all responsibility in the event of the use or installation of materials that do not comply with the rules prescribed in this document as well as with the standards, the technical documents and the applicable professional standards. Any orders placed will be subject to our General Terms and Conditions of Sale, available on request. The drawings and/or images are the exclusive property of Saint-Gobain PAM and are confidential. They must not be reproduced or disclosed to any third party without written consent. They may only be used for the purpose for which they were issued and are returnable on request.

Saint-Gobain PAM Bâtiment

21 avenue Camille Cavalier - BP 129 • 54705 • PONT-À-MOUSSON • France • Tel: +33 (0) 383 807 808 • Email: tcbatiment.sgpam@saint-gobain.com • www.pambuilding.com
Société par action simplifiée au capital de 6 812 970,75€ • SIREN 799 283 882 • RCS NANCY