

# PAM-GLOBAL PLUS

## Short radius bend 68°

### DESCRIPTION

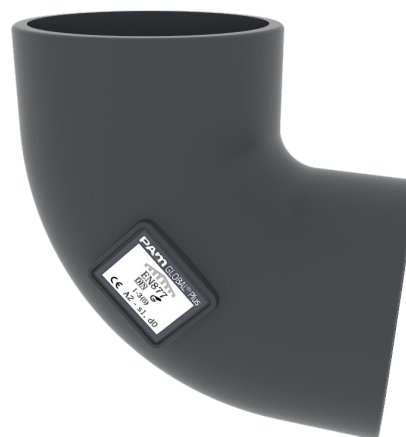
Part of the Plus range, the PAM GLOBAL Plus 68° short radius bend allows a change of direction of the wastewater in above and below ground applications when exposed to hot and/or aggressive fluid. Designed for intensive use, the cast iron epoxy coated fittings are indefinitely recyclable.

### RECOMMENDED USE

- Aggressive effluents
- Corrosive atmosphere
- Fat Wastewater
- Hot effluents
- Industrial Wastewater

### STANDARDS & APPROVALS

- Industry Product Standards:
  - DIN EN 877
- Acoustic Performance:  $L_{sc} \leq 10$  dB(A) &  $LaA = 47$  dB(A) according to EN 14366 with 2L/s.
- Range fire classification: A2-s1,d0



### Material & Coatings

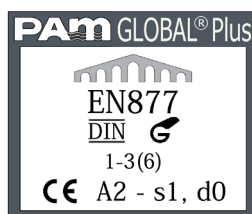
- Cast Iron
- Coating: grey RAL 7015, epoxy, average dry film thickness 300  $\mu$ m.

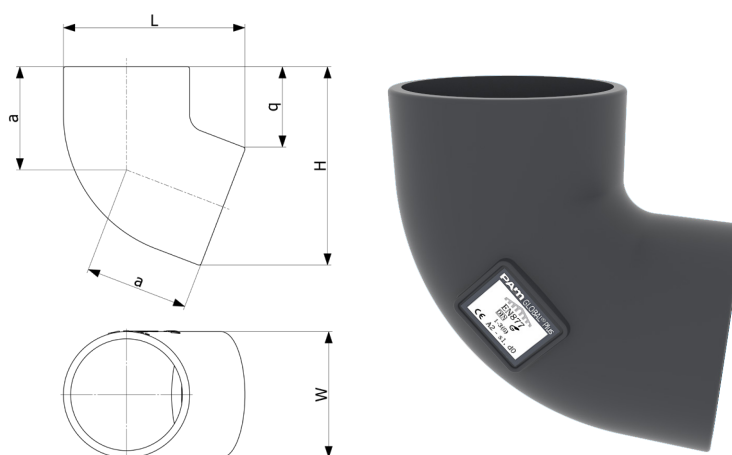
### TECHNICAL FEATURES

- Hot water resistance: 24h at 95°C.
- Thermal cycle resistance: 1500 cycles between 15°C and 93°C.
- Chemical resistance for  $1 \leq pH \leq 13$ , up to 80°C.
- Salt spray resistance: more than 2500h.

### ENVIRONMENTAL DATA

- Percentage of Recycled Content: 99 %
- Recycling Information: Cast iron is 100% recyclable through the existing recycling industrial network.  
Data source: Environmental Product Declaration S-P-02014





DN	L	H	W	a	q	Weight	Product Code
50	104	123	58	65	70	0.8	155200
75	131	149	83	80	72	1	176736
100	159	176	110	90	74	1.8	155235
125	188	205	135	105	80	3	155260
150	219	237	160	120	89	4.1	155276
200	277	295	210	145	99	7.8	155452

All dimensions are in mm and nominal weights are in kg

This document is provided for information purposes only and our company reserves the right to modify the information contained herein at any time. Our company declines all responsibility in the event of the use or installation of materials that do not comply with the rules prescribed in this document as well as with the standards, the technical documents and the applicable professional standards. Any orders placed will be subject to our General Terms and Conditions of Sale, available on request. The drawings and/or images are the exclusive property of Saint-Gobain PAM and are confidential. They must not be reproduced or disclosed to any third party without written consent. They may only be used for the purpose for which they were issued and are returnable on request.

### Saint-Gobain PAM Bâtiment

21 avenue Camille Cavalier - BP 129 • 54705 • PONT-À-MOUSSON • France • Tel: +33 (0) 383 807 808 • Email: tcbatiment.sgpam@saint-gobain.com • www.pambuilding.com  
Société par action simplifiée au capital de 6 812 970,75€ • SIREN 799 283 882 • RCS NANCY