

PAM-GLOBAL S

Short double branch 88°



DESCRIPTION

The short double branches of the PAM GLOBAL S range are cast iron components, allowing the lateral connection of two pipes of smaller diameter than the initial diameter, with the indicated angle.

RECOMMENDED USE

- Rainwater
- Valve water
- Wastewater

STANDARDS & APPROVALS

- Industry Product Standards:
 - DIN EN 877
- Acoustic Performance: $L_{sc} \leq 10$ dB(A) & $LaA = 47$ dB(A) according to EN 14366 with 2L/s.
- Range fire classification: A1

Material & Coatings

- Cast Iron
- Coating: red-brown, anti-corrosive cataphoresis epoxy, average dry film thickness 70 μ m.

TECHNICAL FEATURES

- Hot water resistance: 24h at 95°C.
- Thermal cycle resistance: 1500 cycles between 15°C and 93°C.
- Chemical resistance for $2 \leq pH \leq 12$.
- Salt spray resistance internal coating: more than 350 h.

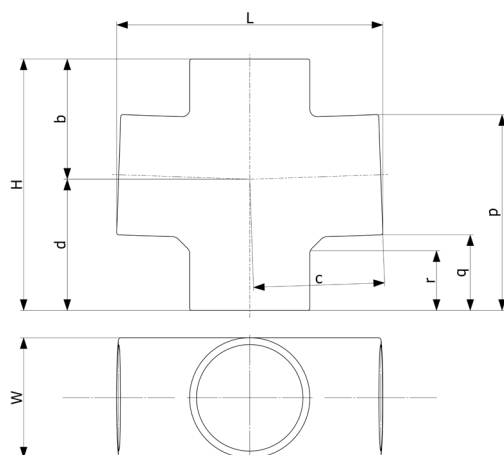
ENVIRONMENTAL DATA

- Percentage of Recycled Content: 99 %
- Recycling Information: Cast iron is 100% recyclable through the existing recycling industrial network.
Data source: Environmental Product Declaration S-P-02013



PAM-GLOBAL S

Short double branch 88°



DN	dn	L	H	W	b	c	d	p	q	r	Weight	Product Code
100	50	212	170	110	76	105	94	127	69	45	2.2	155825
100	75	220	190	110	90	110	100	145	62	40	2.7	179685
100	100	243	230	110	105	120	115	179	69	49	3.7	155858
125	100	263	235	135	115	135	130	184	74	48	4.5	155874
150	100	294	245	160	115	145	130	190	80	52	5.9	155907

All dimensions are in mm and nominal weights are in kg

This document is provided for information purposes only and our company reserves the right to modify the information contained herein at any time. Our company declines all responsibility in the event of the use or installation of materials that do not comply with the rules prescribed in this document as well as with the standards, the technical documents and the applicable professional standards. Any orders placed will be subject to our General Terms and Conditions of Sale, available on request. The drawings and/or images are the exclusive property of Saint-Gobain PAM and are confidential. They must not be reproduced or disclosed to any third party without written consent. They may only be used for the purpose for which they were issued and are returnable on request.

Saint-Gobain PAM Bâtiment

21 avenue Camille Cavalier - BP 129 • 54705 • PONT-À-MOUSSON • France • Tel: +33 (0) 383 807 808 • Email: tcbatiment.sgpam@saint-gobain.com • www.pambuilding.com
Société par action simplifiée au capital de 6 812 970,75€ • SIREN 799 283 882 • RCS NANCY