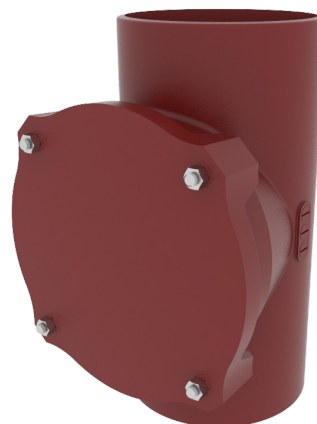


PAM-GLOBAL S

Access Door with round tight plate



DESCRIPTION

Part of the Standard drainage system, the PAM GLOBAL S access pipe with round tight plate allows you to enter the network. The access pipe is made up of a cast iron body and a round cover plate coated with a reddish-brown epoxy film applied by cataphoresis.

RECOMMENDED USE

- Rainwater
- Valve water
- Wastewater

STANDARDS & APPROVALS

- Industry Product Standards:
 - DIN EN 877
- Acoustic Performance: $L_{sc} \leq 10$ dB(A) & $LaA = 47$ dB(A) according to EN 14366 with 2L/s.
- Range fire classification: A1

Material & Coatings

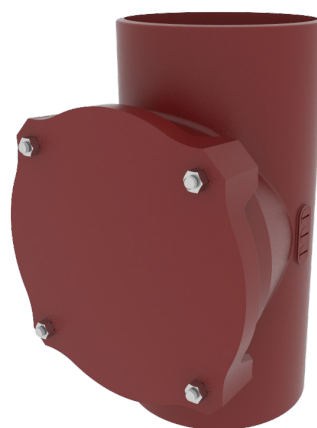
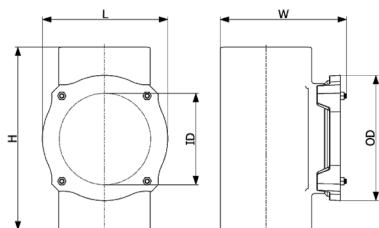
- Cast Iron
- Coating: red-brown, anti-corrosive cataphoresis epoxy, average dry film thickness 70 μ m.

TECHNICAL FEATURES

- Hot water resistance: 24h at 95°C.
- Thermal cycle resistance: 1500 cycles between 15°C and 93°C.
- Chemical resistance for $2 \leq \text{pH} \leq 12$.
- Salt spray resistance internal coating: more than 350 h.

ENVIRONMENTAL DATA

- Percentage of Recycled Content: 99 %
- Recycling Information: Cast iron is 100% recyclable through the existing recycling industrial network. Data source: Environmental Product Declaration S-P-02013



DN	L	H	W	ID	OD	Number of bolts	Weight	Product Code
50	105	190	93	53	58	2	2.3	179191
75	134	220	115	78	83	2	3.2	179647
100	159	260	139	104	110	2	5	179192
125	202	280	202	152	202	3	7	280010
150	243	320	226	180	243	4	9.8	280012
200	243	360	277	180	245	4	12.9	280013
250	274	380	362	180	245	4	18.7	280014
300	326	400	413	180	245	4	25	280015

All dimensions are in mm and nominal weights are in kg

This document is provided for information purposes only and our company reserves the right to modify the information contained herein at any time. Our company declines all responsibility in the event of the use or installation of materials that do not comply with the rules prescribed in this document as well as with the standards, the technical documents and the applicable professional standards. Any orders placed will be subject to our General Terms and Conditions of Sale, available on request. The drawings and/or images are the exclusive property of Saint-Gobain PAM and are confidential. They must not be reproduced or disclosed to any third party without written consent. They may only be used for the purpose for which they were issued and are returnable on request.