

SMU PLUS

Short Single Branch 45°



DESCRIPTION

Part of the Specialized Plus range, the SMU Plus single branche allows the junction between two pipe runs at a 45° angle for conveying hot and/or aggressive wastewater fluid. Designed for intensive use, the cast iron epoxy coated fittings are indefinitely recyclable.

Material & Coatings

- Cast Iron
- Coating: grey RAL 7015, epoxy, average dry film thickness 300 µm.

RECOMMENDED USE

- Aggressive effluents
- Corrosive atmosphere
- Fat Wastewater
- Hot effluents
- Industrial Wastewater

TECHNICAL FEATURES

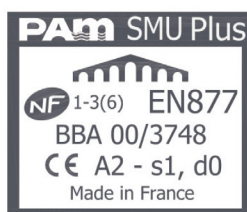
- Hot water resistance: 24h at 95°C.
- Thermal cycle resistance: 1500 cycles between 15°C and 93°C.
- Chemical resistance for $1 \leq \text{pH} \leq 13$, up to 80°C.
- Salt spray resistance: more than 2500h.

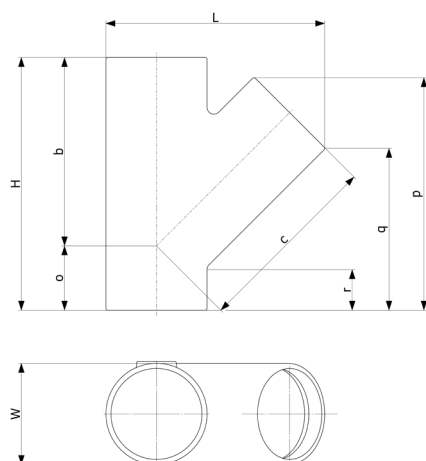
STANDARDS & APPROVALS

- Industry Product Standards:
 - NF EN877
- Acoustic Performance: $L_{sc} \leq 10$ dB(A) & $LaA = 47$ dB(A) according to EN 14366 with 2L/s.
- Range fire classification: A2-s1,d0

ENVIRONMENTAL DATA

- Percentage of Recycled Content: 99 %
- Recycling Information: Cast iron is 100% recyclable through the existing recycling industrial network.
Data source: Environmental Product Declaration S-P-02014





DN	dn	L	H	W	b	c	o	p	q	r	Weight	Product Code
50	50	144	185	58	135	135	50	165	124	36	1.35	155316
75	50	156	180	83	135	135	45	161	120	43	1.6	155331
75	75	179	215	83	155	155	60	198	140	40	2.2	155344
100	50	191	200	110	165	165	35	172	131	47	2.4	155365
100	75	214	235	110	170	170	50	209	151	46	3.2	155368
100	100	238	275	110	205	205	70	253	175	45	4	155380
125	50	218	205	135	185	185	20	170	130	44	3.2	155398
125	75	237	240	135	195	200	45	215	156	51	4.2	176784
125	100	261	280	135	220	220	60	254	177	47	5	155400
125	125	284	320	135	240	240	80	296	201	49	5.2	155409
150	75	265	255	160	210	220	35	220	161	54	5.1	176785
150	100	287	295	160	240	240	55	262	185	54	5.8	155430
150	125	307	325	160	255	255	70	298	202	52	7.4	155432
150	150	323	355	160	265	265	90	333	219	53	7.9	155442
200	100	340	310	210	265	265	40	275	198	67	9.3	155459
200	125	360	340	210	280	280	55	310	215	64	11.6	173812
200	150	383	375	210	300	300	75	353	240	66	12.3	155461
200	200	418	455	210	340	340	115	428	280	68	17.1	155470
250	150	440	405	274	350	350	55	358	245	75	22	208730
250	200	486	480	274	390	390	90	440	291	75	22.4	155483
250	250	537	580	274	430	430	130	530	335	70	29	155490
300	250	588	580	326	465	465	115	540	347	80	37.6	155500
300	300	634	660	326	505	505	155	661	431	115	46.3	155507
400	300	728	660	429	555	555	105	620	389	86	56.4	155510

All dimensions are in mm and nominal weights are in kg

This document is provided for information purposes only and our company reserves the right to modify the information contained herein at any time. Our company declines all responsibility in the event of the use or installation of materials that do not comply with the rules prescribed in this document as well as with the standards, the technical documents and the applicable professional standards. Any orders placed will be subject to our General Terms and Conditions of Sale, available on request. The drawings and/or images are the exclusive property of Saint-Gobain PAM and are confidential. They must not be reproduced or disclosed to any third party without written consent. They may only be used for the purpose for which they were issued and are returnable on request.