

# SMU S

## Short Single Branch 45°



### DESCRIPTION

Part of the standard range, the SMU S single branche allows the junction between two pipe runs at a 45° angle for conveying fluid waste or rainwater. The cast iron fittings are coated with a reddish-brown epoxy film applied by cataphoresis and are fully and indefinitely recyclable.

### RECOMMENDED USE

- Valve water
- Rainwater
- Wastewater

### STANDARDS & APPROVALS

- Industry Product Standards:
  - NF EN877
- Acoustic Performance:  $L_{sc} \leq 10$  dB(A) &  $L_{aA} = 47$  dB(A) according to EN 14366 with 2L/s.
- Range fire classification: A1

### Material & Coatings

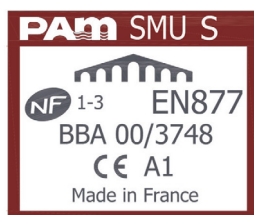
- Cast Iron
- Coating: red-brown, anti-corrosive cataphoresis epoxy, average dry film thickness 70  $\mu$ m.

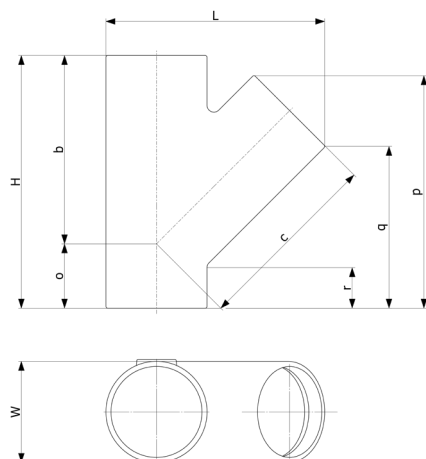
### TECHNICAL FEATURES

- Hot water resistance: 24h at 95°C.
- Thermal cycle resistance: 1500 cycles between 15°C and 93°C.
- Chemical resistance for  $2 \leq \text{pH} \leq 12$ .
- Salt spray resistance: more than 350h.

### ENVIRONMENTAL DATA

- Percentage of Recycled Content: 99 %
- Recycling Information: Cast iron is 100% recyclable through the existing recycling industrial network. Data source: Environmental Product Declaration S-P-02013





DN	dn	L	H	W	b	c	o	p	q	r	Weight	Product Code
50	50	144	185	58	135	135	50	165	124	36	1.35	156435
75	50	156	180	83	135	135	45	161	120	43	1.6	156490
75	75	179	215	83	155	155	60	198	140	40	2.2	156544
100	50	191	200	110	165	165	35	172	131	47	2.4	156618
100	75	214	235	110	170	170	50	209	151	46	3.2	156625
100	100	238	275	110	205	205	70	253	175	45	4	156701
125	50	218	205	135	185	185	20	170	130	44	3.2	156769
125	75	237	240	135	195	200	45	215	156	51	4.2	156771
125	100	261	280	135	220	220	60	254	177	47	5	156775
125	125	284	320	135	240	240	80	296	201	49	5.2	156813
150	75	265	255	160	210	220	35	220	161	54	5.1	176733
150	100	287	295	160	240	240	55	262	185	54	5.8	156879
150	125	307	325	160	255	255	70	298	202	52	7.4	156883
150	150	323	355	160	265	265	90	333	219	53	7.9	156931
200	75	303	260	210	240	240	20	218	159	64	7.4	176734
200	100	340	310	210	265	265	40	275	198	67	9.3	156982
200	125	360	340	210	280	280	55	310	215	64	11.6	156984
200	150	383	375	210	300	300	75	353	240	66	12.3	156989
200	200	418	455	210	340	340	115	428	280	68	17.1	157030
250	100	398	330	274	315	315	15	276	198	72	13.6	157073
250	125	420	370	274	335	335	35	318	223	75	17.8	157074
250	150	440	405	274	350	350	55	358	245	75	22	157075
250	200	486	480	274	390	390	90	440	291	75	22.4	157078
250	250	537	580	274	430	430	130	530	335	70	29	157106
300	100	445	350	326	345	345	5	287	208	88	18.9	157138
300	125	464	360	326	360	360	15	316	221	80	22.7	157139
300	150	487	415	326	380	380	35	359	246	81	28	157140
300	200	547	485	326	415	440	70	454	305	81	31	157141
300	250	588	580	326	465	465	115	540	347	80	37.6	157142
300	300	634	660	326	505	505	155	661	431	115	46.3	157169
400	300	728	660	429	555	555	105	620	389	86	56.4	157178
400	400	820	835	429	645	645	190	795	492	101	98	157185

All dimensions are in mm and nominal weights are in kg

This document is provided for information purposes only and our company reserves the right to modify the information contained herein at any time. Our company declines all responsibility in the event of the use or installation of materials that do not comply with the rules prescribed in this document as well as with the standards, the technical documents and the applicable professional standards. Any orders placed will be subject to our General Terms and Conditions of Sale, available on request. The drawings and/or images are the exclusive property of Saint-Gobain PAM and are confidential. They must not be reproduced or disclosed to any third party without written consent. They may only be used for the purpose for which they were issued and are returnable on request.